

THE TROUTDALE CHAMPION

MAY / JUNE 2024

City, Neighborhoods Team Up to Reduce Summer Wildfire Risks



With the dry summer season on the way, the City's Parks and Community Development departments are teaming up to ensure City residents are doing all they can to enhance the community's "defensible space". Defensible space is the buffer between one's house and potential wildfire fuel such as unruly tree limbs or shrubs. Thanks to an Oregon State Fire Marshall's (OSFM)

Community Wildfire Risk Reduction Grant, the City has been awarded \$60,000 to conduct a variety of risk reduction projects over the next three years.

One of these projects will include a yard debris disposal event in three identified neighborhoods - **Sandee Palisades, Strawberry Meadows, and the homes along the eastern edge of Beaver Creek Canyon.**

The first of the yard debris disposal events will run from Thursday, June 20th through Sunday, June 23rd in the Sandee Palisades neighborhood. The event will include an informational "kick-off" meeting **Tuesday, June 18th at 6:30 p.m. at Sandee Palisades Park**, to educate residents on the best practices for creating defensible spaces. Refreshments will be provided.

The City will provide dumpsters strategically located throughout the neighborhood so residents can safely dispose of any potential fire starters. Additional information about the event will be mailed to residents of the Sandee Palisades neighborhood as June approaches, but feel free to browse OSFM's information on creating defensible space and hardening structures, and begin learning what you can do to make your home and community safer. For more information, go to <https://oregondefensiblespace.org/creating-defensible-space/>.

Strawberry Meadows and homes along the eastern edge of Beaver Creek Canyon will see yard debris events in 2025 and 2026.

Questions? Please contact Nik Ramstad, Assistant Planner at 503-674-1261, or by email at nik.ramstad@troutdaleoregon.gov

AMR Lifeguards return to Troutdale on Memorial Day

Every year, since 1999, the American Medical Response (AMR) River Rescue program has provided lifeguard services on the Sandy River at Glenn Otto Park, beginning Memorial Day through Labor Day weekend (10 a.m. to 8 p.m. every day. Before the AMR program began, an average of two people drowned every year at Glenn Otto Park. In a true community partnership, AMR, the Troutdale Booster Club and other community members established the Oregon River Safety Program.



AMR staffs the Park with two lifeguards per shift, and typically adds a third, and even fourth, when temperatures and/or crowds increase. **Please remember that the river poses serious dangers for swimmers.** The currents are strong, the river is icy cold, swift and unpredictable. Water levels and currents fluctuate and change from day to day, and debris is a problem, both above and below the water. The lifeguards have approximately 75 free loaner life jackets available for infants, kids and adults. (Continued on Page 4)

The wait is over!

TROUTDALE CLEANUP EVENTS & SPRING / SUMMER EVENTS

see page 3

see page 2



New Sandy River Park and Trail Coming this Year!

After 20 years of dreaming, the City will finally begin construction of our new Sandy River Park and Trail on The Confluence site. The City retained 3 acres along the west side of the Sandy River from downtown to the I-84 Bridge. It will be a waterfront park with tables, benches, playgrounds, river observation areas and cultural information signs. The trail will connect with the 40-mile loop trail around the Metro region, and connect to the Historic Columbia River Highway State Trail. The project received a majority of its funding from Metro and the Oregon State Parks Department. Construction should begin in July or August and be completed in about 6-8 months.

Can I bring my dog to the park?

Learn about recent changes to rules regarding leashed dogs in Troutdale's parks

For years, City code has generally prohibited dogs and other domestic animals, on or off-leash, from entering Parks and Greenways in the City of Troutdale. In the wake of extensive community surveying as part of the Parks Master Plan, the Parks Advisory Committee and been working on code modifications to allow on-leash dog access in specific parks.

- Beaver Creek Canyon Greenway
- CP Park
- Cannery Park
- Helen Althaus Park
- Kiku Park
- Lewellyn Park
- Sandee Palisades Park
- Sunrise Park
- Sweetbriar Park
- Weedin Park
- Woodale Park

There are two notable omissions from this list; Columbia Park is home to a fenced-in, off-leash dog area, but dogs are not permitted at Imagination Station, on the sports fields, or at the picnic shelters. Dogs are also not permitted, on-leash or off-leash, at Glenn Otto Park. You can learn more about Troutdale's dog-friendly parks at troutdaleoregon.gov/dogs



Photo courtesy of Chris Brecht, Ellingson Lane Photography

US POSTAGE PAID
STANDARD
PRESORT
TROUTDALE, OR
PERMIT #16

City of Troutdale
219 E. Historic Columbia
River Hwy.
Troutdale, OR 97060

POSTAL PATRON

INSIDE

Page 2
Events, and more events!
Joe's Notebook,
Troutdale Community Walk

Page 3
Spring Cleanup Events

Page 4
Meet Your Deputies
Recreation
Calendar and Meetings

Here Comes the Fun!

A look at summer events coming to Troutdale in 2024

First Friday

troutdalefirstfriday.com

Troutdale's First Friday Art Walk & Summer Street Fair is fun for the whole family and showcases the West Gorge's vibrant art scene. The summer street fair expands the event in Historic Columbia River Highway, with over 60 vendors, sidewalk dining, local beers, live music at Mayors Square, a Kid Zone, and much more! **June 7, July 5, August 2, September 6 from 5 to 8 p.m.**

Troutdale Arts Festival

troutdaleartsfestival.org

Kick off the summer arts season in Downtown Troutdale with this grand celebration! Explore the work of more than 80 talented artists in the open air and check out our local galleries as you enjoy food, beer, wine, music, and plenty of activities for the kids. **June 8, from 11 a.m. to 7 p.m.; June 9, from 10 a.m. to 4 p.m.**

Music at the Market

troutdaleoregon.gov/market

Historic downtown Troutdale is the place to be for foodies and music lovers every Tuesday evening in July and August! Local farmers and food producers will sell their provisions as artists perform live music on the Mayors Square stage. **July 2, 9, 16, 23, 30, and August 6, 13, 20, 27 from 4:30 to 8 p.m.**

Movies in the Park

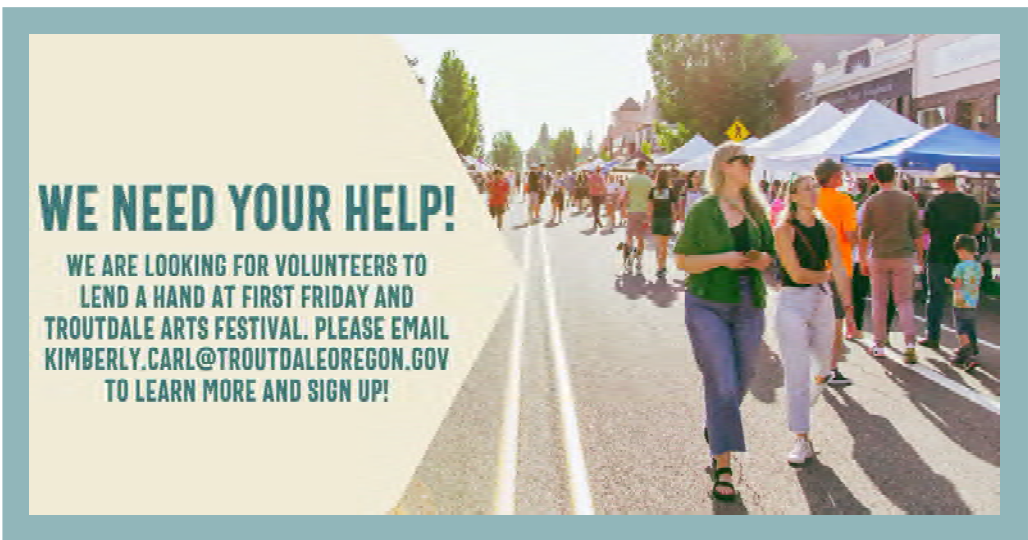
troutdaleoregon.gov/movies

Join us for outdoor movies on the little league field adjacent to Imagination Station. Enjoy a double feature on a giant LED video wall that provides a wonderfully sharp picture even when there is still daylight! These community events are FREE and open to the public. **July 26 and August 16, 6 to 10:30 p.m.**

Kiwanis Cruise In

columbiagorgekiwanis.org

Stroll through downtown Troutdale and check out cars and motorcycles of all shapes and sizes along with live music, raffles, and awards. **August 3 from 9 a.m. to 2 p.m.**



Tourism Magazines Available

Our Visitor Center is doing a bit of spring cleaning, with hundreds of copies of tourism magazines that feature plenty of wonderful photos and graphics that are heading for the recycling bin. If you are interested in taking some, please give the Gateway to the Gorge Visitor Center a

TROUTDALE COMMUNITY WALK

1-1/2 miles in Troutdale!

WEDNESDAY, MAY 22 - 5:30 P.M.

Enjoy the outdoors and learn some local history as you stroll from downtown Troutdale to the Sandy River!

This early evening walk is a great opportunity to meet new people and enjoy the beauty of the area. We'll meet at Mayors Square at 5:30pm, rain or shine. The 1-1/2 mile walk is along paved sidewalks and should take about an hour. It will be led by Recreation staff and will go at a casual pace on mostly flat topography. Kids and leashed dogs are welcome!

Learn more at troutdaleoregon.gov/walk



Joe's Notebook

Code Compliance Reminders

If your property borders a Troutdale street, residents are responsible for keeping **side-walks free of debris and trees trimmed up 7' 6" over side-walks and 11 ft. over the street.** (This includes back yards, even if you have a fence).

If your property borders a greenway or park, our Parks Department requests that you don't use these areas for composting your yard debris. And yes, there is an ordinance prohibiting that.

Please, please **DO NOT BLOW THE LEAVES INTO THE STREET.** Not only do we have an ordinance that prohibits it, but it plugs up the storm drains and

that creates problems for your neighbors, and the Public Works department.

I would also like to encourage everyone to **put away their campers and trailers and not store them on the street,** unless you are preparing to go camping or hunting. This includes "utility trailers". They cannot be stored on the street even if you leave them attached to your vehicle.

Parking continues to be the most frequent complaint, including vehicles that haven't moved in longer than 96 hours, parking in the wrong direction, blocking mailboxes, and parking at a 90-degree angle to the curb in a cul-de-sac, etc.

If you have expired tags or temporary plates - or no plates at all, your car could get tagged as an "Abandoned Vehicle" by definition:

10.04.020 - Abandoned vehicles

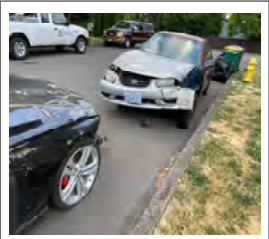
A vehicle that has been deserted, relinquished, or has one or more of the following existing conditions:

- 1.The vehicle license plate or registration sticker has expired or has been canceled
- 2.The vehicle has no license plate
- 3.The vehicle has no visible vehicle identification number (VIN)
- 4.The vehicle appears to be inoperative or disabled
- 5.The vehicle appears to be unlawful to operate on a public street.

If your vehicle is in one of these categories, please park it off the street. If it's leaking oil, that is grounds for an immediate tow.

I would rather not write parking citations, however I have to respond to all complaints. I may have to decorate your vehicle with the dreaded orange tow tag.

Thank you in advance for your cooperation. Joe



Troutdale Spring Cleanup Events

Saving some of your personal waste for special recycling events is great, but reducing and reusing waste is even better! Consider these questions before you buy something new or dispose of something old: Could you borrow or buy it used? Could it be repaired? Could you donate it to a good cause or give it to someone else you know? Remember, it takes more money, energy, and resources to make a new item than to buy used (or nothing at all). Join your fellow Oregonians and continue to think about ways to reuse and reduce when you can.

All Events are Free Unless Otherwise Noted

The City and/or participating vendors **reserve the right to refuse collection of materials for any reason.**

All events are **free of charge** unless otherwise noted.

Please recognize that **event offerings are subject to change or cancellation.**

Please continue to check the city's Troutdale Cleanup Event webpage for up-to-date event information, or call Troutdale's Environmental Specialist at 503-674-3311.

Remember to check the date, time and place of each event - and if any restrictions apply!

Yard Debris Drop-off, May 11, 8 AM – 4 PM

at **Allwood Recyclers, Inc.**, 22800 NE Marine Drive, Fairview

The City has partnered with Allwood Recyclers to offer FREE two (2) cubic yards of yard debris disposal per coupon for Troutdale community members. Disposal does not include dirt, sod, rock, concrete or garbage. Painted, stained or pressure-treated wood is not accepted. **Allwood Recyclers reserves the right to refuse non-residential customers and those who present multiple coupons at their first or repeat visits.**

**YOU MUST PRESENT THIS COUPON
TO RECEIVE FREE DISPOSAL!**

May 11

Bulky Waste Curbside Collection

by Waste Management

When: Saturday, May 11, **by 6 a.m.**

Where: **At your curb** for single family homes

WEST of the centerline on Buxton/Troutdale Road

May 18

Bulky Waste Curbside Collection

by Waste Management

When: Saturday, May 18, **by 6 a.m.**

Where: **Curbside** for single family homes

EAST of the centerline on Buxton/Troutdale Road

How it works:

Eligibility Requirements: Single-family residents with garbage service through Waste Management within Troutdale city limits. If you pay your water bill to the City of Troutdale, this is a good indication that you are eligible. To determine if your address is within Troutdale city limits, please use the city's Address Search tool at <https://www.troutdaleoregon.gov/gis/page/interactive-web-maps>. Still unsure? Contact Troutdale's City Hall at 503-665-5175 to confirm your eligibility.

Accepted Items: Small appliances (not containing freon), BBQ grills, mattress and box spring (1 set), carpeting (and pad), furniture, scrap metal, lawn mower (without fluids), exercise equipment, file cabinets, lumber, sinks, tires (five maximum without rims), toilets, water heater (1) drained.

Not Accepted: Animal waste, car batteries, engines, concrete, dirt, sod or stumps, food waste, hazardous materials, items with glass, liquids, paint, propane tanks, refrigerators (and other CFC/refrigerant containing items), rock, roofing materials, industrial waste, commercial waste, fluorescent fixtures, TVs, computers.

June 6 by 6 a.m.

Additional Garbage Curbside Collection

Who: Waste Management

When: Wednesday, June 6, **by 6 a.m.**

Where: Curbside for single-family homes with garbage service through Waste Management

Waste Management will collect, at no additional cost for Troutdale community members, up to five (5) bags (weight per bag not to exceed 45 pounds) of non-hazardous household and non-yard debris, household garbage on the regularly scheduled Thursday curbside pick-up. Please be aware that Waste Management will charge if more than five (5) bags are set out. Garbage must be bagged. Loose garbage will not be collected.

**Questions about any of these disposal opportunities?
Call the Public Works Department at 503-674-3300, or
go to troutdaleoregon.gov/cleanup**

June 22, 9 a.m. - Noon

Troutdale Public Works Building 342 SW 4th Street

Paper Shredding

by Shred Northwest

Secure on-site document destruction service for Troutdale community members. Please limit to four (4) grocery sized paper bags of paper, and remove paper documents from binders, binder clips, or plastic sleeves before shredding. **This service will stop once the truck is full, but the truck has yet to be filled during past events.**

Bicycle Reuse

by Bike Works by pear

Come and donate your used bicycle(s)! Your generous donation will help support the efforts of Bike Works by pear and support their free bike referral program Everybody Bikes! This in turn will keep bicycles from the scrap yard in their efforts to refurbish and repurpose bicycles for those in need.

Bicycle Tube Recycling

by Cycle Dog, an Earth Friendly Pet Company

Old bike inner tubes are recycled into dog collars, leashes, and toys at the Cycle Dog factory in Portland, Oregon.

Accepted: Old inner tubes that are defective in any way, i.e., cuts, slashes, faulty valves, old patches etc. All sizes accepted, but preferred between 700 28/32 and 700 35/45.

Not Accepted: Thorn resistant tubes, rim strips, tires, or tubes with goo inside.

Oregon e-Cycles Recycling Event

by Green Century Electronics Recycling (GCER)

Accepted: Anything with a plug or anything that would run on batteries, in any condition. Including computers, cell phones/mobile devices, computer peripherals, monitors, networking devices, network devices, printers, televisions, AV equipment, cables/wires, batteries (alkaline, all types or rechargeable, button cell, cell phone, lead acid).

Important: You will need to prepare your electronics for recycling. For more information about data security and preparation of electronic devices for reuse, please contact GCER at 503-764-9963 ext.0, or visit their website at <http://greencenturyonline.net/faqs>

Not Accepted: Ballasts, Fluorescent tubes and lamps, ink/toner, media (CDs/DVDs, cassette tapes, floppy disks), capacitors, solar panels w/frame, refrigerators, freezers, items containing Freon, fire extinguishers, devices containing Mercury (e.g., thermostats, ionization smoke detectors).

For a more complete list of acceptable/non-acceptable items, refer to the Troutdale Cleanup Event webpage at: troutdaleoregon.gov/cleanup

Styrofoam and Plastic Film

by Styro Recycle LLC, via Green Century Electronics Recycling

Accepted: Styrofoam that is clean/dry and without tape, labels, cardboard, laminate, nails, glue, ink, paint or food residue. Please sort your Styrofoam into one of the following five (5) categories:

- 1) Expanded Polystyrene (PS) #6 Grade A (e.g., rigid board foam that breaks when bent, picnic/shipping coolers)
- 2) Expanded Polystyrene (PS) #6 Grade B (e.g., egg carton, OXP foam insulation (pink, blue, grey)
- 3) Expanded Polystyrene (PS) #6 (e.g., packing peanuts (in bags/container, non-starch))
- 4) Polyethylene foam (LDPE) #4
- 5) Polyethylene film (HDPE/LDPE) #4 (e.g., plastic bags, bubble wrap, plastic wraps, plastic packaging such as blue/white Amazon bubble mailers, pink poly anti-static bags, air pillows.

Not Accepted: Dirty, wet foam or any foam with tape stickers or labels, "Instapaks" or any plastic-wrapped spray in foams, hot tub covers, foam with glued cardboard on it, Polyurethane foam (#1 PETE), Polypropylene foam (PP) #5 / Expanded Polypropylene (EPP), starch-based foam, spray foam of any kind that includes insulation and "Instapaks", foam insulation, food contaminated foam, laminated foam, strapping/banding plastic, PolyProp (PP) film food packaging, multi-layer soft plastics, craft foams / craft board, yellow bubble mailers (paper outside/bubble inside)

