

# Sandy River Park & Trail

The City of Troutdale is designing and preparing to construct a 3.5 acre waterfront park and trail along the Sandy River in the area known as [The Confluence at Troutdale](#). The site is within City's first and only [urban renewal district](#) (URA).

Once complete, the trail will connect downtown Troutdale to the regional 40-Mile Loop trail system and the existing trail along the I-84 bridge. The trail and park will provide views and better access to the Sandy River Delta natural area and future trails into the Columbia River Gorge. The trail and park will also complement future private commercial and residential development efforts in the URA.

## Project History

### **2014 - Sandy River Access Plan**

In 2014, the City in partnership with Metro developed the Sandy River Access Plan, which created the template for proposed waterfront park and trail to better connect Troutdale residents and visitors with one of our most iconic natural assets, the Sandy River. In doing so, park and trail investment would coincide with private development that works well with the surrounding area.

### **2019 & 2020 - 30% Design**

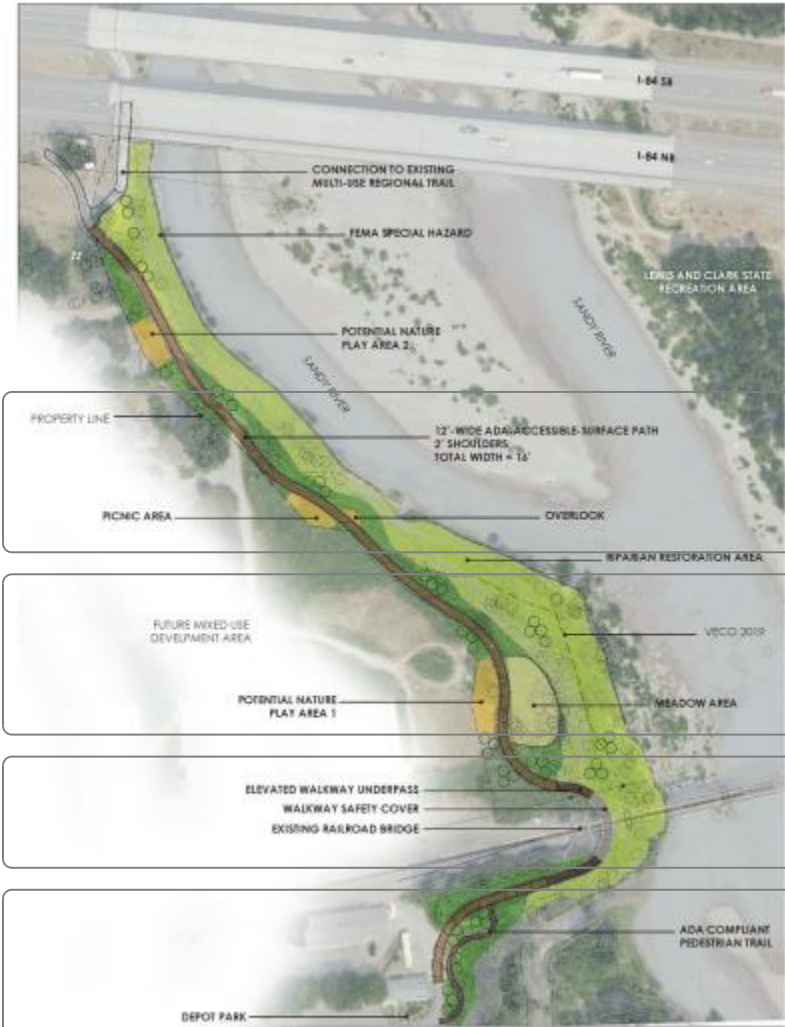
In October 2019, an open house on trail and park design concepts was held, with about 50 attendees offering feedback. From that feedback, the City worked with MZLA and Firwood Design Group to establish a 30 percent design of the park and trail.

The design calls for a minimum 12 foot wide trail that connects with the existing trailhead to the I-84 bridge in the north with the currently improved trail in Depot Park to the south. The design calls for an elevated section that will go underneath the Union Pacific Railroad tressle. The path will need to be elevated in this area to accommodate for allowable slope ratings for ADA compliance and to have minimal interference with natural floodplains in this area.

The park that is envisioned will be linear in nature and would feature three main areas of congregation, including the possibilities of play equipment for kids and a gathering area for picnics and events. Efforts to maintain significant trees already on site and to introduce new trees were also addressed.

**2020 & 2021 - Next Phases**

The City will move forward with 90 percent design of the trail. A multi-year invasive species removal program will also be initiated to remove blackberry and English ivy growth along the trail. The city will also secure grant funding to help fund efforts as well, which could take place as early as



**Supporting Documents**

2022 - Sandy River Greenway Project Description Sheet 2.28 MB

2014 - Sandy River Access Plan Final Report

2020 - 30 Percent Design

Sandy Riverfront Park RFQ Addendum 1 Packet

SANDY RIVER ACCESS TRAIL : 30% DESIGN PLAN



Sandy Riverfront Park RFQ

[View Slideshow](#)